

Entropion

Ophthalmology Service



Michigan Veterinary
Specialistssm

www.michvet.com

We Can Help

LOCATIONS:

29080 Inkster Rd.
Southfield, MI 48034
(248) 354-6660

3412 E. Walton Blvd.
Auburn Hills, MI 48326
(248) 371-3713

1425 Michigan St. NE
Grand Rapids, MI 49503
(616) 284-5300

What is Entropion?

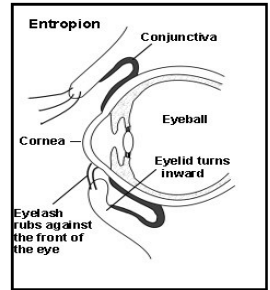
Entropion is the inward rotation of all or part of an eyelid margin, resulting in the hair rubbing against the surface of the eye. This can lead to conjunctivitis and corneal damage.

Entropion can be either congenital (inherited) or acquired. Congenital entropion is common in certain breeds.

Facial conformation contributes to the severity of the defect. In the larger breeds, such as the St. Bernard and Great Dane, the eyelid is excessively long. This causes the middle lower lid to hang out, pulling the sides inward.

In breeds like the Shar Pei, the defect is due to a small eyelid opening. This puts tension on the eyelid, and rolls it inwards.

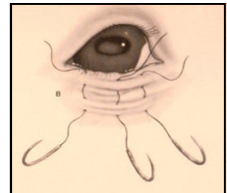
Acquired entropion, or "spastic" entropion, is usually a result of blepharospasm, or contraction of the eyelid muscles (extreme squinting). This clinical sign usually indicates pain and irritation on the eye surface from an abnormal eyelash or debris, for example.



Clinical Signs

Congenital entropion usually becomes evident prior to 1 year of age. Initial signs include squinting and excessive tearing.

Mild entropion can cause minor discomfort, where as severe irritation can lead to conjunctivitis (reddened and irritated eye), damage to the cornea, and possible corneal ulceration.



Non-surgical Treatment Options

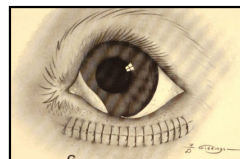
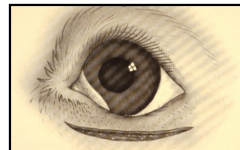
In certain breeds, such as the Shar Pei, entropion may become clinically relevant as early as 14 days of age. For these puppies, a temporary tacking of the eyelids to the skin is appropriate. The puppies should be monitored while the sutures are in place. The sutures can be removed in approximately 3 weeks. Many puppies will have grown out of the defect at that time, but some may still require permanent correctional surgery.



Surgical Treatment

Holtz-Celsus Procedure

This is the most common surgical technique for correction of entropion. A small strip of skin and muscle are removed from below the eyelid. The edges are then closed, pulling the eyelid margin outward.



Post-operative Care

Daily wound cleaning with moist cotton will be required. Topical antibiotic ointments may be needed. An E-collar may also be required to prevent your pet from rubbing its eyes.

Recheck

The sutures should be removed 10-14 days after surgery.