

Ectropion

Ophthalmology Service



Michigan Veterinary
Specialistssm

www.michvet.com

We Can Help

LOCATIONS:

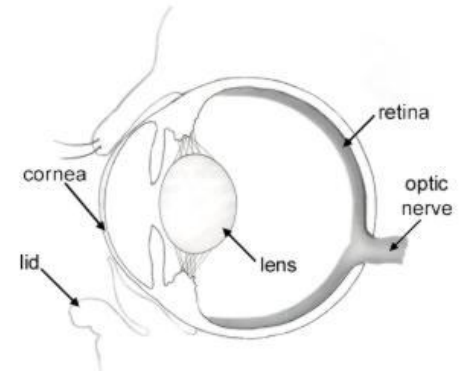
29080 Inkster Rd.
Southfield, MI 48034
(248) 354-6660

3412 E. Walton Blvd.
Auburn Hills, MI 48326
(248) 371-3713

1425 Michigan St. NE
Grand Rapids, MI 49503
(616) 284-5300

What is Ectropion?

Ectropion is an outward rolling of the eyelid with exposure of the conjunctival tissues. This may result in a lack of complete closure of the eyelid (termed lagophthalmos). The lower eyelid is usually affected and this condition is commonly associated with an excessively long eyelid opening. Sometimes patients with long eyelids may have both entropion (an inward rolling of the eyelids) and ectropion in one or both eyes.



Adapted from D Slatter, Fundamentals of Veterinary Ophthalmology, 1990, Philadelphia, WB Saunders

Pre-disposed Breeds

Ectropion can be seen in all breeds of dogs but is most commonly seen in the Bassett Hound, St. Bernard, Bloodhound, Great Dane, Newfoundland, Bull Mastiff, and several spaniel breeds. Many of these dogs are bred for this “droopy eyed” appearance.

Treatment

In some cases, ectropion does not require treatment. It may result in only low grade conjunctivitis. If corneal disease is present as a result of the ectropion, surgical correction is recommended. There are many surgical procedures used to correct ectropion and the proper technique is decided by the specific conformational abnormalities in the eyelid and surgeon preference. In most cases, the eyelid conformation can be corrected with one procedure. In complicated cases, especially those resulting from scarring due to eyelid trauma, multiple surgeries may be required to obtain successful results. In some patients, medical treatment and surgery may be necessary to improve the condition.